

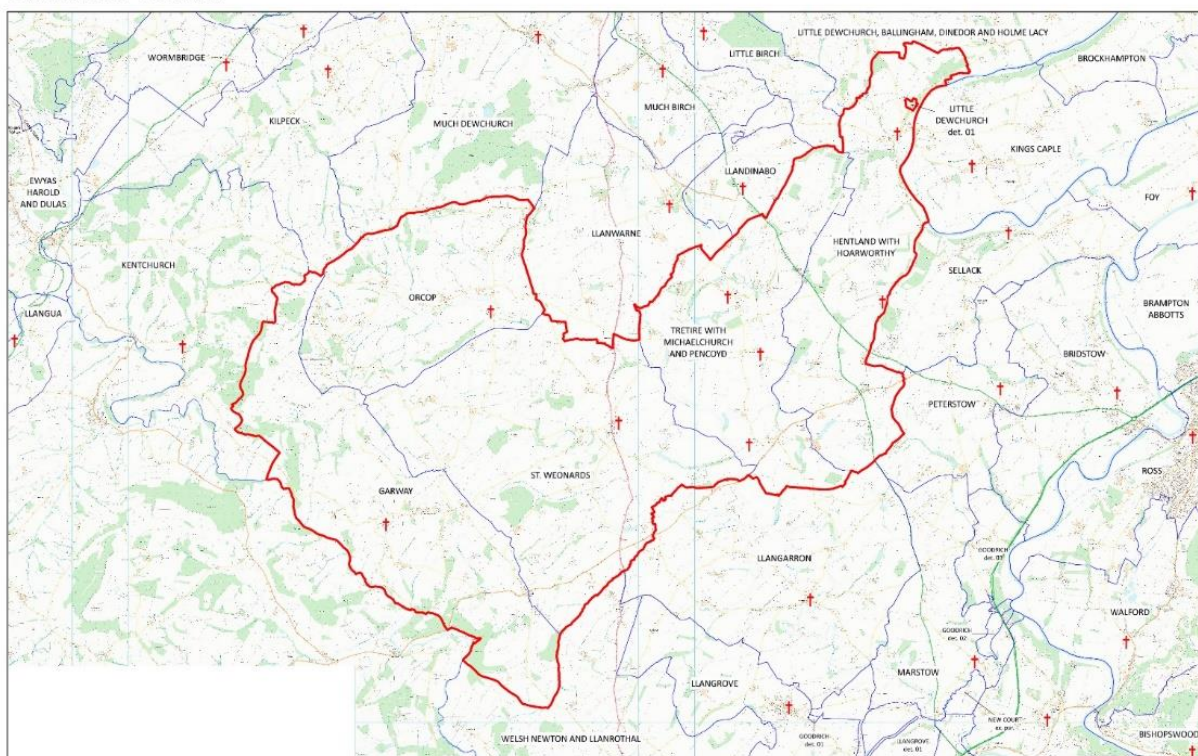
BENEFICE PROFILE



ST WEONARDS, GARWAY, ORCOP, PENCOYD, TRETIRE, MICHAELCHURCH, HENTLAND AND HOARWITHY



Benefice of St Weonards



This map was compiled for the Diocese of Hereford by Alistair Sutherland in August 2021 with digital data from Field Dynamics. It contains parish data supplied by the Commissioners of the Church of England, and Ordnance Survey data reproduced with the permission of Ordnance Survey on behalf of HMSO. ©Crown copyright and database right 2021. All rights reserved. Ordnance Survey licences nos 100040148 and 100019918. Please note that some legal parish names may be abbreviated for clarity.



Benefice Profile

St Weonards Benefice www.stw.org.uk is made up of five rural parishes in the western part of the Ross and Archenfield Deanery. It has a population of about 2,000 with good road access to Hereford, Ross-on-Wye and Monmouth (M50 – 20 minutes, Severn Bridges – 50 minutes). Although there are a few large, highly successful agribusinesses in the benefice, many smaller family farms are finding life challenging, and they worry about the future. The vicarage in St Weonards is in a central location. St Weonards and Garway have maintained primary schools. There are two village shops, three village halls, five pubs and a garage.

The benefice embraces a variety of worshipping traditions.



Benefice gather for farewell to Associate Minister



Benefice Lammas service in woods

An important feature of the benefice is the tradition, since the 1970s, of collaborative working and worshipping together. The benefice embraces a variety of worshipping traditions. The first Sunday of the month we have a benefice service that rotates around different churches (on Zoom during COVID-19), which enables us to meet and worship together.

The Churchwardens' Council meets quarterly to discuss strategy, forthcoming services and community events, prior to PCC meetings. During the vacancy, the meeting has been held monthly to support strong communication across the benefice. A joint APCM provides an opportunity to share information and the benefice's hopes and challenges for the future.

Pre-pandemic, it was usual for a number of PCC meetings each year to be held jointly, to enable the vicar to share information more easily, and enhance benefice cohesion. A joint benefice account is in place for the vicar's expenses, and fees for weddings and funerals.

The benefice website www.stw.org.uk and a benefice-wide Parish News enhance communication. The hard copy circulation is 455, also available on the website, and advertising profits of approximately £1500 p.a. are split between parish expenses and small local grants.

Benefice All Age services are held fortnightly. For more details, see St Weonards Parish Profile. Young people from across the benefice attend an ecumenical youth group, held at a local farm in a dedicated building, led by members of our local churches.

Strong links have been developed over many years with Garway School. Clergy take assemblies and attend many key events. Pre-pandemic, church members from across the parishes were regularly involved in presenting Open the Book. Links with St Weonards School are being strengthened, as one of the churchwardens is the school administrator, and pupils have taken part in Experience Easter and Christingle.

To encourage the exploration of faith with the community, an annual Easter Egg Hunt is held in a local garden and woodland, attended by at least 100 families, particularly from Garway School. Making an Easter Garden and cross of flowers with families enabled our recently retired assistant priest and lay leaders to engage in discussions about the Easter story.

A small prayer group meets online fortnightly to pray for benefice, churches and local communities. Pre-pandemic, a Local Ministry Team prayed together and provided support for ministry across the benefice.

The benefice values its ecumenical links with other Christians. Shared occasions have included Easter dawn services on Garway Hill, and worship in Garway Community Hall. On the annual Palm Sunday walks we share worship in the Baptist and Methodist chapels, and churches in neighbouring benefices.

There is a strong musical tradition, with several competent organists and pianists willing to support services, and an occasional choir. An active bellringing band of people from within the benefice and beyond ring for regular and special services. The band welcomes people of all ages to ring and learn.

All parishes have Parish Safeguarding Officers who regularly attend appropriate diocesan training.

Our benefice has been through challenging times for about five years. Although almost all our parishes have appropriate parish officers, most parishes would welcome a simplification of church organisation for future sustainability. Going forward, there would be a strong desire to provide some administrative assistance when funds permit.

In this period of 'interregnum' the parishes have developed a collaborative approach and wish to explore how to further improve this to a manageable group, to support the incumbent.

So please join us in our discovery.



Making a cross of flowers

Community singing in Garway



St Weonards

The St Weonards civil parish population is 450. There are two churchwardens, six additional PCC members and 26 electoral roll members. One churchwarden, who is a qualified organist, sits on Deanery and Diocesan Synods.

The church, Grade 1 listed, adjacent to the vicarage, is in the centre of the village; the church tower is visible from afar! Nearby is the school, shop/post office and village hall. A bus service connects the village to Hereford and Monmouth. A new development of 30+ houses is an exciting potential for mission, and a further development of about 25 houses is planned.

The church is always open, as is the churchyard. About 15 years ago, the inside of the church was re-organised to provide a kitchen, toilet and community space. Recent essential repairs have been carried out. A wi-fi connection enables services to be available for those less able to attend in person. A full-circle ringing tower of six bells provides the opportunity at weekly practices for beginners and experienced bellringers.

Following our Eco Church bronze award in 2020, we have continued to try to work out and integrate the core themes of sustainability into our common life as a church, aiming for a silver award. Solar panels support our aims and help to cover electricity costs. In line with Caring for God's Acre, part of our churchyard is a wild space, and we have a green burial area.

The parish has a strong tradition of collaborative lay leadership of worship. This has proved fruitful in developing the gifts of an ordinand now in training from within our church community. Twice monthly All Age Worship services for the benefice, usually streamed online, have an average attendance of 28 including 10 children. One of these services currently includes a celebration of Holy Communion by a visiting priest. The usual format is a couple of hymns, an action song and an interactive sermon from the ordinand. We give thanks and pray for each other and our world and have time afterwards to catch up and encourage one another, drink coffee or squash, and eat cake!



Baptism



Some of our All Age congregation

As a traditional rural community, occasional offices are valued and well attended, giving an important opportunity for pastoral outreach, e.g. September 2022 baptism for a local farming family with 120.

Special services are also valued. 2021 Harvest Festival (attended by 13 children + 50 adults); carol service (20 + 49); Christmas Eve crib service (19 +30); Christmas Eve 'midnight' communion led by Bishop Richard Jackson (6 + 40).

Annually the parish supports local, national and international charities. An annual parish fete has raised much-needed funds and provided an enjoyable social occasion; other community activities took place pre-pandemic (e.g. patchwork exhibition, biennial Arts Festival, display of World War 1 memorabilia, wedding dress display).

The PCC has promoted the Parish Giving Scheme which has ensured that our financial position is relatively secure, and we have increased our Parish Offer in line with the needs of the Diocese. Much of our giving relies on a small number of generous givers, including people who live outside the parish. Therefore, collections from occasional offices form an important part of our income.

The St Weonards Old School Religious Education Fund is available for educational purposes. It is administered by the vicar and churchwardens but is entirely separate from the PCC's funds.

Our Parish Safeguarding Officer is a member of the Diocesan Safeguarding Working Group and independent chair of the Hereford Cathedral Safeguarding Management Group. Safeguarding information is shown at each All Age Service.

St Michael's at Garway

St Michael's is a peaceful church surrounded by the beautiful Herefordshire countryside set just ten minutes' walk from the Garway village centre. The church is always open and receives year-round visitors, many of whom come because of its historic connections. It dates from the 12th century and is one of six churches known to be of the Knights Templar. It is unusual for its tower having been built separately from the church body. We are lucky to have a very knowledgeable historian in our community who regularly takes visiting groups around the church and churchyard. There is a remarkable sense of peace and tranquillity within St Michael's, as though walking back in time, on which many visitors have commented. The full-circle ringing tower has five bells.



Service in the beautiful Grade 1 building



Tree-planting with St Michael's tower in background

We have a small PCC of three members, who work hard to keep the church functioning, but we do not have a churchwarden at present. Currently there are no regular services, but special services bring a loyal following. In 2022 there have been 3 baptisms, 3 weddings, 2 funerals and 1 internment.

[Friends of Garway Church](#) is a recently-formed group of 61 members who are interested in maintaining the church building. They are currently raising funds for repairs to the roof which has seen some tile slippage over the last couple of years. The PCC is unable to contribute much to the Parish Offer as we need significant funds for church repairs.

Garway village, with about 500 residents, is a very active community, and benefits from a traditional pub, the [Garway Moon Inn](#). The Garway Community Centre, built in 2018 with the help of Lottery funding, is the first fully Passivhaus standard community building in the country, and is home to many community groups. These include coffee mornings, fitness classes, embroidery and quilting groups, film nights, a singing group, and a visiting post office. It has also been the venue for church services, which have brought the whole village together for harvest and Christmas, as well as ecumenical services with music.

Our SPICE Girls (Supporting People In Community Endeavours) group, give a lot of their time to helping organise community events. They have organised nativity events and carols on the common.

A biennial Arts Festival much loved by the community is held in the church. Organised by the local community, it is a full day of readings, songs and instrumental music offered by the village and friends, showing the rich talent in our communities.

St John the Baptist at Orcop

The rural village of Orcop has a population of about 420, a popular pub and modern village hall. There is one churchwarden and six members of the PCC. The fabric of our C14 church remains in good order and we have successfully raised significant funds to carry out major drainage works to protect the foundation and floor timbers from damp and rot. The full-circle ringing tower has five bells.

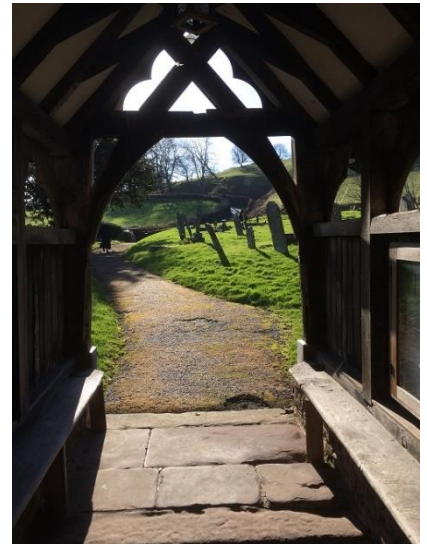
Since the retirement of our previous incumbent, and the subsequent restrictions imposed by the COVID lockdown, we have managed to maintain monthly communion services taken by visiting priests. We also benefit from the support of an organist to play at these services. We are not sure how long we can sustain these services until a new incumbent is appointed. We contribute to the Parish Offer.



The church nestled in a fold in the hill

There has been a steady decline in congregations attending our services, with sometimes as few as six communicants. Festival services have also seen a decline in attendance, especially the harvest service, hitherto an important service in the Orcop calendar, which attracted only 14 in 2021.

We recognise that there seems little interest in our parish in the traditional forms of Christian worship, and it may no longer be viable to hold regular services. This has also been reflected in the poor response to the recent consultations. However, we hope that every effort should be made to continue the main festival services (Christmas, Easter and Harvest) and to serve the demand for weddings, baptisms and funerals.



Through the porch

The church has developed a tradition as a cultural focus and we continue to organise poetry, music and other such events in the church. A Christmas play, "The Shepherds", was performed in December.

The way forward?

Much as our dwindling congregations enjoy traditional services in their own parish churches, we recognise that most travel to these services by car. They could equally easily travel to the neighbouring benefice church, St Weonards, for instance which benefits from adequate parking, a kitchen and a toilet, whereas Orcop Church has none of these, not even running water.

We aim to continue with festival services, subject to finding clergy to take them, as well as fund-raising via the annual fete, churchyard bingo and other events and to exploit the reputation of Orcop as a "Poets' Church" arising from links with the celebrated poet Frances Horovitz who is buried in the churchyard.

We aim to ring the bells on suitable occasions and to provide a welcoming venue for baptisms, weddings and funerals.

What does this mean for the new incumbent?

We support the agreed person profile for our future incumbent. We would hope that we could maintain a monthly traditional service at Orcop, but realise that this may be impractical. If so, we would hope that the new incumbent could take festival services, baptisms, weddings and funerals, and minister to the sick, lonely and elderly in the parish. We would hope that he or she would support the PCC in its efforts to keep Orcop Church alive and serving the community.

In conclusion

The PCC recognises the enormous pressures that face the diocese in re-ordering the benefice to best effect and here we have endeavoured to be realistic in our profile and hopes for the future.

Tretire with Michaelchurch and Pencoyd

The parish covers the churches of St Denys, Pencoyd and St Mary's, Tretire. The church of St Michael at Michaelchurch is also in the parish, owned and maintained by the Churches Conservation Trust.

We have sought to continue the pattern of Evening Prayer on the 4th Sunday of the month alternated between St Denys Pencoyd and St Mary's Tretire. These services look for clergy support where possible and are sometimes lay-led. We have also been delighted to run a Family Communion Service four times a year (two per church), which is much appreciated by parishioners.

The fourth Sunday in June has been reserved for many years for an evening service in the old Saxon church of St Michael's. A team of friends from around the parish join with brooms and mops to prepare the space, and happily a wide group of people who enjoy the place, a simple service, some singing and the fellowship afterwards, continue to support this special event.

A regular pattern of worship, in our own parish churches and around the St Weonards Benefice is appreciated by the community who struggle to keep track of changes.

Christmas usually attracts a large congregation for morning communion. Easter is well attended, and Harvest continues to provide a valued recognition of the rural businesses of the parish. It is followed by a much-loved supper and auction.



Community Open Garden



Community 'China sale' in church

Coming out of COVID we ran an outdoor carols event with fire-pits for warmth, together with mulled wine nativity readings and carols. This attracted some people who would not normally attend in the church. We continued this to a second year and are now reviewing how best to provide an accessible event for the future.

We have a dedicated PCC team of eight people who are good at running community fundraising events, from cream teas and fetes, plays, pub quiz and more. The community support these events and have expressed a desire for the church to continue to provide this hub of activity and coherence to the villages. However, most have busy lives and are not able themselves to commit to committee work, and we continually seek new faces on the team.

There is one church warden and a treasurer, and the requirements for safeguarding, Synod rep, etc are currently met. We are lucky to have a long-running form of Parish Giving in place, and people continue to support us on a regular basis. We are grateful that this means with a bit of PCC work we have managed to keep our buildings in good repair and provide a reasonable contribution to the diocesan Parish Offer.

St Dubricius at Hentland with St Catherine's at Hoarwithy

Hentland with Hoarwithy parish consists of three main settlements stretching, in part, along the beautiful River Wye, with a population of around 400 people, of whom 36 are on the electoral roll. The parish is blessed with two fine churches. Three church wardens, nine active PCC members, two Deanery Synod members one of whom is also on Diocesan Synod, serve the congregations from the following two churches:

St Dubricius, Hentland is the original church of the parish, and one of the oldest in the deanery of Ross and Archenfield. The main body of the church is C13th, with a C14th west tower. The north aisle is reputed to be of the C12th, and the church's interior today owes much to the Revd William Poole who was first curate then vicar from 1854 to 1902 and his association with the architect John Pollard Seddon (1827-1906). Recently, thanks to a substantial grant from Heritage Lottery Fund and other sources, Seddon's decorative scheme in the chancel has been expertly restored. A rare churchyard cross with its original carved head stands in the north-east churchyard.



St Dubricius

Monthly communion services are held with a congregation of between 12 and 20 people. Every Palm Sunday, the parish celebrates the ancient custom of distributing Pax Cakes, with the shaking of hands and the exchange of the greeting 'Peace and good neighbourhood!' The custom, which is shared with two other local parishes, Kings Cagle and Sellack, arose in the distant past when villagers were quarrelsome and a local landowner, Lady Scudamore, gave money to provide cakes and ale in perpetuity, so their converse could be friendly over shared refreshment.

The church continues to arrange concerts, harvest lunches, and other parish events open to the wider public. Pre-pandemic, two members of the parish enjoyed contributing to the *Open the Book* at Garway Primary School.

St Catherine's Church, Hoarwithy was consecrated as a chapel of ease in 1843 and beautification was started by Preb. William Poole in the early 1870s in the predominately Romanesque style. The churchyard is the resting place for five soldiers who died in the First World War and the Commonwealth War Graves Commission will shortly be signposting this.



Wedding



Concert

The monthly communion service sees a congregation of around 20 to 25, and around 6,500 visitors a year visiting the extraordinary Grade 1 listed Italianate style church. Its unique surroundings and decor enable the church to host a number of weddings and concerts as well as a growing number of community meetings and events including [h.Art](#), an established art event across Herefordshire each September. The community run a well-attended Pop-up Café in church to support various events. A community singing group of about 20 enjoy meeting each week with the excellent acoustics of the church, and put on concerts during the year.

The church (Grade 1) is reached only by a steep footpath (Grade 2) with steps, so disability access is virtually non-existent. However, we have recently purchased the bungalow next door to the church to enable us to provide disabled access and better access for all. With no village hall or meeting place, the longer-term aim is to modernise the church so it can be better used to as a community asset.

One unexpected benefit of purchasing the bungalow is that we currently house a Ukrainian refugee family of husband, wife, three children and grandmother. The parish participates in the Parish Giving Scheme and has contributed its appropriate share to the Parish Offer.



St Catherine's Church

Within the village we have a popular pub, a small shop and a thriving campsite, with many of the campers visiting the church. With much prayer our vision, through the continued restoration and improvements to the church, is to create a welcoming community space.

Ross Deanery Pastoral Plan in relation to St Weonards Benefice

Bishop Richard has agreed to the appointment in the benefice whilst the deanery is still considering its Deanery Pastoral Plan (DPP). The post has an 80-20 split with approximately one day a week given over to a role in the deanery. Each post in the deanery as it becomes vacant will have a deanery responsibility and this role is set out in more detail below.

The post is presently suspended, and the person appointed will be priest-in-charge on the understanding that the benefice boundaries may well change once the DPP is adopted. It is likely that the post holder will be expected to have responsibility for one or two further parishes, but they will be fully involved in this process once appointed. Anyone coming into this post will need to be flexible in their approach and willing to manage change and open to new challenges.

Derek Chedzey, Archdeacon of Hereford

Thank you for your interest in this post, which is quite certainly an interesting post! If you are drawn to the best of English rural life in an area of outstanding natural beauty, or a Templar church, or the unexpected splendour of an Italianate church perched above the Wye River, you will find much here to stir your heart. Quality of personal and family life in the countryside with good schools and nearby towns is matched, I believe, by the quality of ministerial experience offered by the Benefice and Deanery. Experienced lay leadership in the parishes of the Benefice provide realistic but creative wisdom to share the responsibility of guiding the Benefice forward, and an engaged and strategic Deanery Leadership Team will offer support and help in matters of pastoral reorganisation.

The 20% Deanery component to the role provides scope for work beyond the bounds of the benefice. As considerable work has been done in researching and planning Deanery ministry to children and families, you would not be starting from scratch in an unfamiliar setting, but rather be building on an existing and sound foundation. As a fellow parish priest in the Deanery I have found great professional and personal fulfilment in working in this enchanting corner of God's vineyard. May God bless your discernment of his call.

Sean Semple, Rural Dean, Ross and Archenfield Deanery and Rector of the Ross Parishes

Benefice Role 80%

The benefice seeks someone to be a servant of God in the service of the community

To play a distinctive and intentional role in inspiring each generation, proclaiming Christ and growing disciples by:

- Sharing the cure of souls with the Bishop and Rural Dean and exercising spiritual leadership as part of a team.
- Helping to lead the benefice in mission by encouraging it to focus on the diocesan priorities of making disciples, growing leaders and engaging with younger generations.
- Inspiring creative mission and ministry; building on existing traditions and being visionary in exploring new opportunities.
- Developing the energy and encouraging the gifts of the whole people of God.
- Exercising a pastoral, sacramental and teaching ministry across the benefice and community.

Responsibilities

1. Leadership in mission

- Lead the congregations of our five parishes in setting and holding a vision for creative mission.
- Be a visible presence across the benefice, and encourage and strengthen partnerships between church, schools and community groups.
- Encourage and support existing activities in the benefice, to maintain the welcoming nature of our churches and help us to extend that welcome beyond the church building.

2. Collaboration, team leadership and ministry development

- Provide leadership, encouragement and support for churchwardens and PCC across the benefice.
- Identify and encourage gifts in the church community and beyond.
- Develop existing links with ecumenical and neighbouring churches.
- Share in the life, mission and ministry of the deanery.

3. Leading worship

- Lead worship confidently with clear communication, to engage with all ages.
- Working with our congregations, to enhance our spirituality, value and sensitively develop existing services, and explore new and imaginative ways of worshipping.

4. Encouraging discipleship

- Preach the message of the love of God and our neighbours in a way that encourages the development of a generous and mature faith.
- Work with others to develop opportunities for learning, to strengthen discipleship.
- Encourage church members to be generous in giving in every way, as a response to God's generosity, and to further the mission of the church.

5. Pastoral care

- With a pastoral heart, work with others to identify pastoral care needs, and develop structures to respond to those needs, including baptism and marriage preparation, care for the sick, dying and bereaved.

6. Administration and parish organisation

- Work in collaboration with churchwardens and PCCs to ensure effective organisation and good stewardship of resources.
- Ensure good communication across the benefice and community including an online presence.
- Review and develop structures across the benefice, to ensure its future sustainability.

7. Spiritual discipline, self-discipline and own development

- Give appropriate attention to your own personal, spiritual and professional development.
- Participate in Ministerial Development Review and undertake appropriate Continuing Professional Development.
- Maintain professional boundaries.
- Develop and maintain a prayerful spiritual life with appropriate support network.

- Follow a pattern of life that enables the personal, family and spiritual aspects of life to flourish alongside the demands of ministry.

This Statement of Needs should be read in conjunction with the following documents:

- The Ordinal, The Canons of the Church of England, Guidance for the Professional Conduct of Clergy;
- Bishop's Licence, Statement of Particulars issued to the office-holder on successful appointment.

Person Specification

Qualifications

- An ordained priest within the Church of England, or a Church in communion with it, or a Church whose orders it recognises.
- Satisfactory completion of Initial Ministerial Education.
- Designated at selection or Candidates' Panel as Incumbent Status (post-2009) or Stipendiary Ministry.

Essential qualities

- **A love of people, an excellent communicator, with a desire and confidence to engage with people of all ages.**
- **With a living faith, a passion for creative ministry, the ability to respect the existing traditions and grow the worshipping community in new ways.**
- **A vision and confidence to introduce change in parish structures for future sustainability.**

Desirable qualities

- Experience of developing disciples and encouraging a mature faith in others.
- An ability to discern and grow the gifts and talents of others.
- To be confident with modern technology.
- An appreciation of the value of music in worship.

As well as the essential and desirable qualities, we also seek the following:

Personal qualities

We hope you will be someone who has:

- A commitment to prayer individually and with others.
- A willingness to be available and present at times of pastoral need, and a heart to love and care for those in our benefice.
- A commitment to collaborative working/ministry.
- A sense of humour.
- A willingness to learn from others and receive constructive feedback.
- Discretion and the ability to maintain confidentiality.

Personal skills

You are able to demonstrate:

- Excellent communication skills: verbal, written and digital.
- The ability to share your faith in Christ and inspire others.
- A desire to share responsibility with others and delegate.
- The confidence to introduce appropriate change.

- Good organisational skills and efficiency.
- The ability to reverse a car down narrow lanes!

The Diocese of Hereford and the St Weonards Benefice are committed to safeguarding and promoting the welfare of children, young people and vulnerable adults. All post holders are expected to share this commitment. All appointments are subject to acceptable pre-appointment checks, including a satisfactory Enhanced DBS check.

Ross Deanery 20% Element (1 day a week equivalent): Young Children and Families

Outcome: To develop a strategic plan for ministry to and among young people and families within our deanery.

Specifically: To work in conjunction with our incumbents and key children & family workers in each parish/benefice to:

- Assess the needs of what is required and what work is going on within the deanery
- To put together a 'plan of action' for how the deanery can engage with young people and families ensuring that we use our talents & resources wisely; build on strengths; follow the Spirit's leading.
- To identify, support and resource those who lead and support our children's and family work.
- To identify suitable resources that might be available from Hereford Diocese, Church of England & third parties organisations; offering training options and support.
- To provide 'joined up thinking' regarding collective worship and children's ministry options (e.g., OTB, Messy Church, Festival opportunities) wherever possible.

Accountability: To the Rural Dean and the Deanery Leadership Team.

The Vicarage



Vicarage



View north-east from Vicarage garden

The spacious and convenient, purpose-built vicarage is situated in the centre of St Weonards, immediately to the south of the church, to which it has direct access. The school, car park, shop, village hall and A466 with its bus service are all close by.

- Entrance hall, WC, cloaks cupboard. Study with extensive bookshelves.
- Large sitting room, with sliding doors to the dining room.
- Kitchen. Utility room.
- 1st floor: Four double bedrooms, with wardrobes. One with a wash basin.
- Bathroom, with bath and electric shower over. Separate WC.
- Garage and off-street parking for 5-6 cars, secluded garden (approx. ¼ acre).

October 2022

Many thanks for your interest in this post in the Diocese of Hereford. We are the smallest diocese in the country by population, although as you will discover if you come to work here, not by geography!

We have just finished a major refresh of our diocesan strategy. Our vision is clear – to proclaim Christ and grow disciples. We seek to do that through fostering communities of faith living by our three agreed values: Christlike, prayerful and engaged. We believe that the local parishes of our diocese are the centre of our life. These are the engine rooms of mission, pastoral care and community engagement. All the central resources of the diocesan family are geared to supporting, enhancing and encouraging this ministry.

We want priests who will embrace that vision and will seek to live it out collaboratively: with colleagues in the deanery, with myself and the Archdeacons and with ecumenical partners and people of good will seeking to be a blessing to their communities. Above all we want people who can inspire, encourage and equip the whole people of God to be the people God is calling them to be for such a time as this.

We do not expect you to have all the gifts, but we do want you to be able to work with others who complement you, so together we can be greater than the sum of our parts.

A warm welcome in a beautiful part of the world awaits. May God bless you as you seek to discern whether this is the place he is calling you.

With every good wish.



The Right Reverend Richard Jackson
Bishop of Hereford